

portal26

ENTERPRISE GENAI ADOPTION PLATFORM



Customer Case Study

Portal26 for comprehensive
GenAI data and analytics

**BUILDING BOARD
TRUST WITH GENAI
INSIGHTS**



Customer Background

Portal26's customer is a publicly-traded enterprise with global operations and a geographically-distributed workforce over 10,000+ strong. They are an early adopter for all things Generative AI.

Business Problem

The company is diligently following the Board's guidance to explore GenAI's potential to create competitive advantage, lower costs, and increase productivity. However, delivering feedback to the board on the actual value created often requires a team of analysts to compile and filter through data sets manually or leveraging basic business intelligence technologies. Even then, the visibility is "point-in-time" and partial at best, resulting in an extremely expensive and sub-optimal process.

Stakeholders



CEO



CAIO



CIO



CTO

Desired State

The company would like multi-faced reporting capabilities to appropriately manage responsible GenAI adoption. This requires two dynamic reporting stacks:

- (1) Board reporting
- (2) Functional/departmental owner reporting

Board reporting would break out at-a-glance information on GenAI tools, departmental usage, risk exposures, compliance confidence, growth trends, and adoption. Dynamic reports will capture trends and would inform needed adjustments e.g. when executives seek outcomes on how GenAI is impacting specific projects.

Required Capabilities

- Historical consumption of prompt inputs at the user and project level including GenAI application across historical prompts so that behavior and trends can be identified and measured
- Comparative review of usage against policy (compliance scoring)
- Graphical representation of tool trends, adoption, and associated risk/values real-time and over time

Portal26 Solution

The company deployed the Portal26 GenAI Adoption Platform in a half-day. As data lit up the Portal26 dashboards, the company had immediate access to C.O.R.E reports for the board. "Compliance, Operations, Risk, Efficacy/ Execution/ Enablement". Functional owner reporting identified core toolsets, user engagements, and other important insights around GenAI usage. The board used this data to provide guidance on adoption and cost management. The management team also gained visibility needed to measure individual performance and contribution.

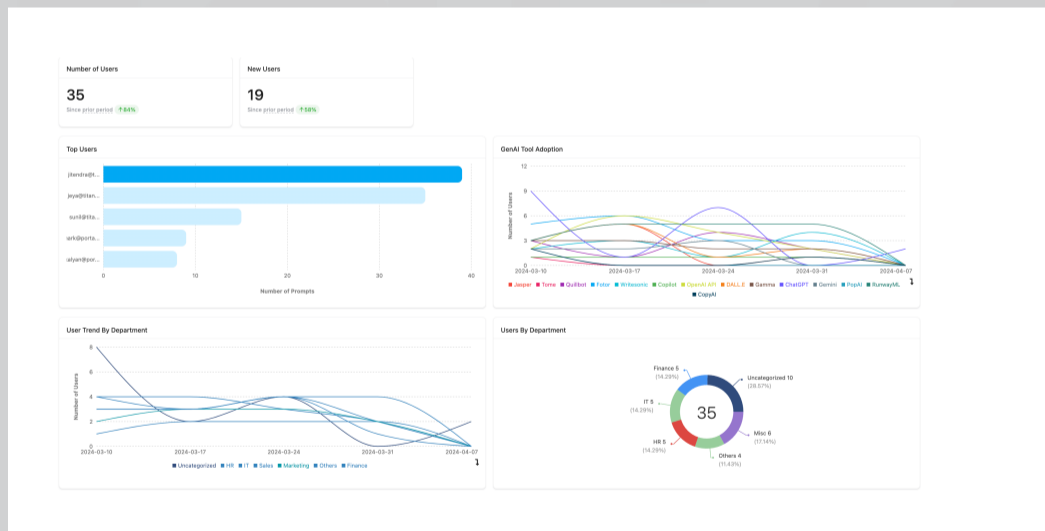
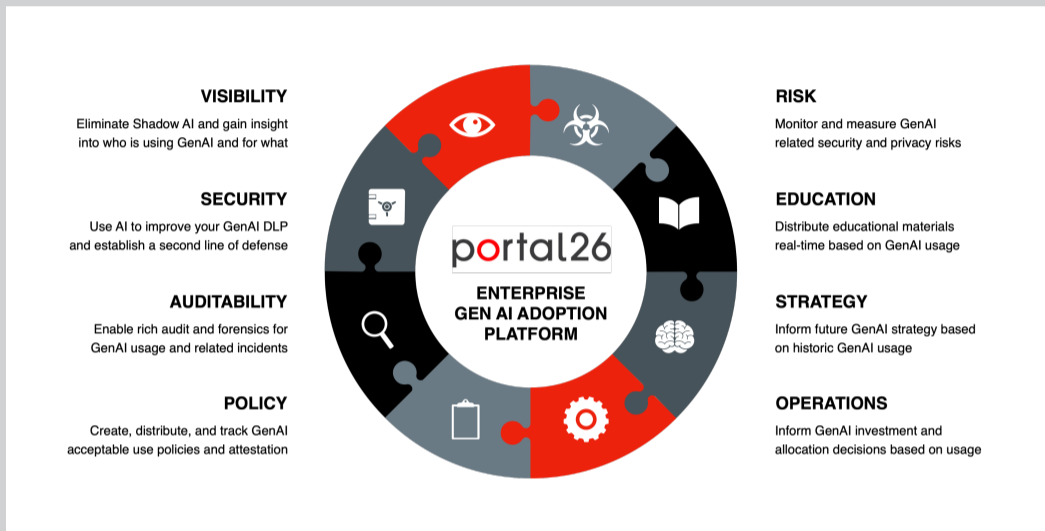
1/2 Day
Deployment

10,000+
Monitored employees

99.9%
Efficiency gains for
GenAI reporting

12 FTEs
Freed up from manual
data analysis

Results



Prior to Portal26, the company had a team of 12 analysts working on providing analytics to support the board and C-Suite, and even then there was insufficient data. Further, the data was old by the time it was presented. After Portal26, these tasks are completed in minutes and with a few clicks. The C-Suite and functional owners are also kept up-to-date with regularly-scheduled, automated reporting.

To learn more about the Portal26 GenAI Adoption Platform
Find us at portal26.ai Email us at info@portal26.ai